



### GLA Housing Information:

LOOKING FOR AEROBEDS: *GLA desperately needs air mattresses for our weekend lighthouse excursion -preferably single or double size. Please email Samantha at [gla@beaconpreservation.org](mailto:gla@beaconpreservation.org) if you can bring aerobed with you to the program.*

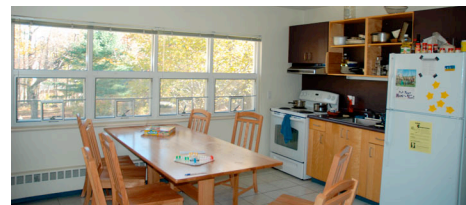
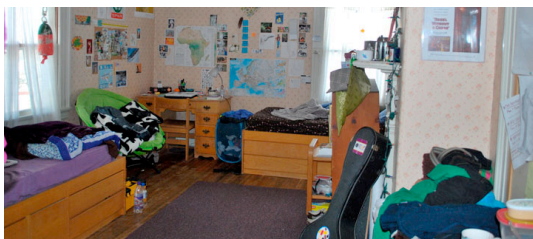
### Living at College of the Atlantic and The Schoodic Education and Research Center

**Q:** What type of accommodations do students have?

**A:** Students live in residence halls on the College of the Atlantic (COA) campus for the first two weeks of GLA and then we will move to The Schoodic Education and Research Center (SERC) campus for the final week of GLA.

#### COA

Students will be assigned to single, double or triple dorm rooms. Students will live in **Seafox** (1<sup>st</sup> week) and **Blair/Tyson** (2<sup>nd</sup> week) residence halls at COA.



**Seafox** is a dormitory within a Victorian ocean front mansion. While rooms vary in size and amenities, they all include basic furnishings including bed, desks and chairs, but some are more primitive than others.

**Blair Tyson** is more modern with some rooms having bunk beds and dressers as well as desks.



## SERC

Students will stay in the campus bunkhouse where they will be assigned four to a room. Each room contains two sets of bunk beds (four beds total).

### Housing Facility Important Details

- All housing facilities have a shared common lounge/kitchen area and bathroom (male and female separate) facilities. There are no private bathrooms within the bedrooms.
- **Linens are not provided;** therefore each student should bring one pillow, one fitted sheet and one sleeping bag.
- **Students will have opportunities to go to store to buy personal snacks, which they may keep in the shared kitchen and in dorm rooms (dry goods),** but remember, regular meals are provided in the COA and SERC dining halls (breakfast, lunch, and dinner).
- Cooking is not permitted without ARM supervision. NO MICROWAVE POPCORN.
- On weekends, ARMs will supervise group-cooking competitions for community meals in dorms.
- Cell service at COA varies according to cell phone carrier. If you are unable to reach your child, parents will be provided with staff contact numbers to reach students, and students will be able to call parents from land lines and phones with service in the evening from 10 to 11pm.

**Q:** Are male and female rooms separate?

**A:** Yes, male and female students reside in entirely separate dormitory wings at COA and SERC. Male and female GLA Academic Resource Mentors (ARMS), who oversee the GLA students, live with them in each gender-specific wing of the dormitories and are “right down the hall” if needed. Each student receives a key for his or her room and for their specific dorm building, as these are key-entry facilities.

**Q:** Do all students have roommates?

**A:** Yes. Each student shares a room with 1-2 other roommates at COA, and 3 other roommates at SERC.

**Q:** Can students pre-select a roommate?

**A:** No, **students will be assigned a roommate.** Roommates are assigned without racial, religious, or economic discrimination, and students are informed of their room assignment on the day of arrival. Students who come to the program with other students they know cannot request placement within the same dorm room. The Green Light Academy strives to reduce isolation among students and encourages students to meet and make new friends during the three-week residency. Students should know that they will have plenty of time each day to visit with friends during mealtimes, field trips, social events, and free time.

**Roommate and room assignments are determined solely by the GLA staff and the executive director: students and parents should respect the challenge of this difficult process and refrain from asking for specific roommate or room assignments. Any issues regarding room assignments should be addressed to the student's ARM and/or executive director.**

**Q:** Are students responsible for their own laundry?

**A:** Yes. Coin-operated washers and dryers are located in the dormitories when needed. We encourage students to utilize these facilities and not to pack three weeks worth of clothing. **We must travel light and students will have time to wash their clothes from each week on the weekends. In addition we will provide students with detergent but ask that each student bring a roll of quarters, as no change machines are available.** Students should not bring more luggage than they can carry by themselves at one time--INCLUDING their sleeping bag and pillow! Soft backpacks or duffle bags are perfect (rolling hard-shell suitcases are discouraged!). This is no fashion show, so please bring only basics, understand you may get dirty, and be prepared to do laundry as needed."

**Q:** Can students utilize COA and SERC facilities?

**A:** Students have access to the COA and SERC student center, classrooms, library, computer labs, playing fields, and Acadia national park. Specific hours for utilizing the facilities are determined by the GLA staff and the COA and SERC facility summer schedules.

**NOTE: SAFETY FIRST.**

**NO SMOKING.** It is the policy of Green Light Academy **that smoking is not permitted by ANY GLA student or employee EVER.** Students who smoke, or students who are not sure they can refrain from smoking during their GLA stay, should not apply to the program.

**NO OPEN FLAMES.** To reduce any risk of accidental fire, students may not possess matches or lighters in the dormitories. Student must not burn candles, incense, or any other "open flame" materials in the dorms. Covering up a smoke detector in the dorms is not only a violation of GLA Code of Conduct; it is a criminal offense that endangers the lives of others for which a student will be prosecuted. Students who pull fire alarms without cause will be immediately expelled from the program.